

Information

Open hours

Last entry to the museum is 30 minutes prior to closing time.

March - July	8:30–18:00
August	8:30–19:00 (Open until 20:00 on August 5 and 6)
September – November	8:30–18:00
December - February	8:30–17:00

Days closed

December 30 and 31

Admission

	Individual	Groups
Adults	¥200	30 or more ¥160
High school students	¥100	20 or more free
Junior high school students and younger	free	

○Visitors 65 years and older can enter the museum 100yen by showing your passport.

Hiroshima Peace Volunteers

(Apply at the Information counter, East Building 1F, 10:30-14:30)
Free volunteer guides provide information on the museum and the Peace Memorial Park.

Talks by A-bomb Legacy Successors

(Video Theater, East Building 1F)
Open to the public. No reservations and fees are required.

Audio Guides

(Available at the front counter, East Building 1F)
Japanese and English (¥200 per recorder)

Guide to Peace Education

- Materials for A-bomb exhibitions and peace studies are available for loan.
- A-bomb Survivors' Testimony and Talks by A-bomb Legacy Successors are available with prior appointment.



A peace Volunteer guiding in the park



A-bomb Survivor's Testimony

Access

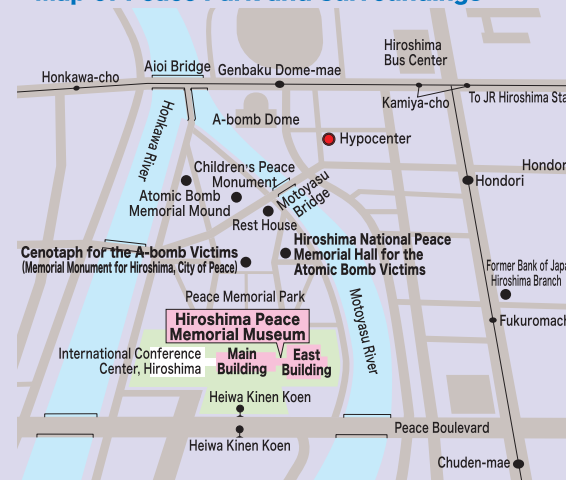
about 20 minutes from the JR Hiroshima Sta.
By bus :

- (1) From south exit, take a Hiroshima Bus bound for Yoshijima (Platform 3, Route 24) and get off at Heiwa-Kinen-Koen (Peace Memorial Park).
- (2) From Shinkansen-guchi exit, take a loop bus (Hiroshima meipuru-pu) and get off at Heiwa-Kinen-Koen (Peace Memorial Park).

By streetcar :

- (1) Take a streetcar bound for Hiroshima Port (Ujina) via Kamiya-cho and get off at Fukuro-machi or Chuden-mae.
- (2) Take a streetcar bound for Eba or Miyajima-guchi and get off at Genbaku-domu-mae (A-bomb Dome).

Map of Peace Park and Surroundings



英語

HIROSHIMA PEACE MEMORIAL MUSEUM



Tricycle Donated by Nobuo Tetsutani



At 8:15 a.m. on August 6, 1945, the city of Hiroshima fell victim to the world's first atomic bombing. The entire city was virtually leveled; thousands upon thousands of lives were lost. Those who managed to survive suffered irreparable physical and psychological damage and still suffer the effects today.

The Hiroshima Peace Memorial Museum collects and displays belongings left by the victims, photos, and other materials that convey the horror of that event, supplemented by exhibits that describe Hiroshima before and after the bombing and others that present the current status of the nuclear age. Each of the items displayed embodies the grief, anger, or pain of real people. Having now recovered from that A-bomb calamity, Hiroshima's deepest wish is the elimination of all nuclear weapons and the realization of a genuinely peaceful international community.

1-2 Nakajima-cho, Naka-ku, Hiroshima City 730-0811

TEL: 082-241-4004 FAX: 082-542-7941

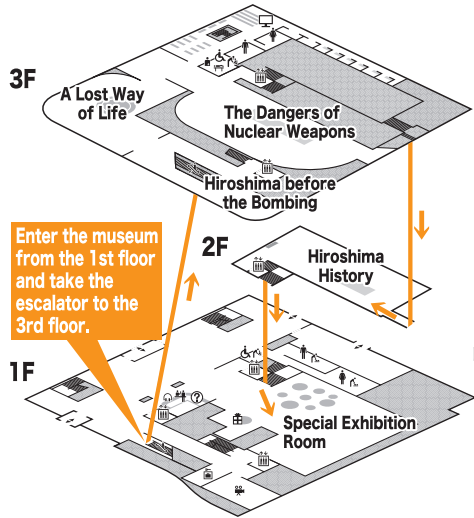
Homepage: <http://hpmmuseum.jp/>

The Main building is currently closed for renovations until 2019.

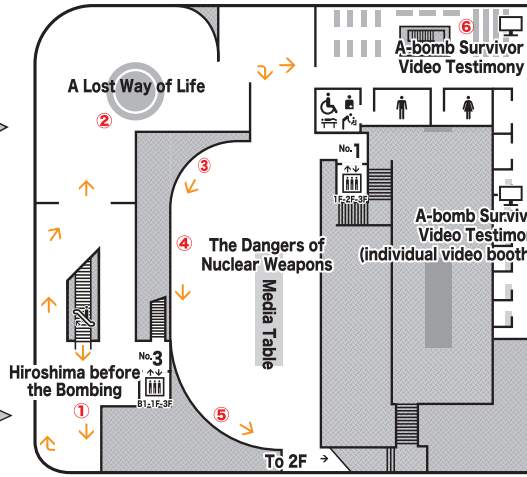
The East building is open to visitors.

For more information, please contact us.

The Main building is currently closed for renovations.



3F Permanent Exhibit



3F Introductory Exhibit

See the daily lives of the local people in Hiroshima and learn how they were destroyed in an instant by the A-bombing.

- ① Hiroshima before the Bombing
- ② A Lost Way of Life

3F The Dangers of Nuclear Weapons

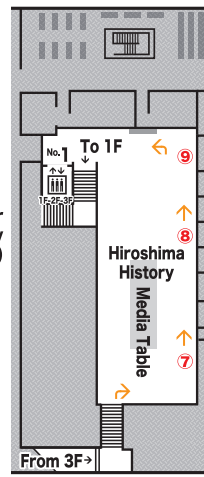
Learn about how the A-bombs were developed and dropped; the damage caused by the intense heat, shock waves, and radiation; and the development and testing of nuclear weapons after the war.

- ③ Development and Use of the Atomic Bomb
- ④ The Menace of the Atomic Bomb
- ⑤ The Nuclear Age and Nuclear Weapons Abolition

⑥ 3F Video Testimonies

Visitors can select and view recorded testimonies.

2F Permanent Exhibit



2F Hiroshima History

Learn about Hiroshima during the war, recovery efforts after the war, and efforts by Hiroshima city and the citizens to eliminate nuclear weapons.

- ⑦ Hiroshima and War
- ⑧ Recovery and Support
- ⑨ Creating a Peaceful World

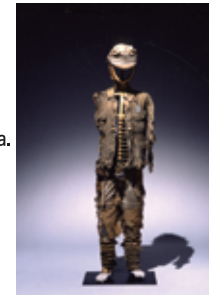
Working to Restore Streetcar Tracks in the City October 1945
Photo by Shunkichi Kikuchi
Courtesy of Harumi Tago



⑩ 1F Special Exhibition Room

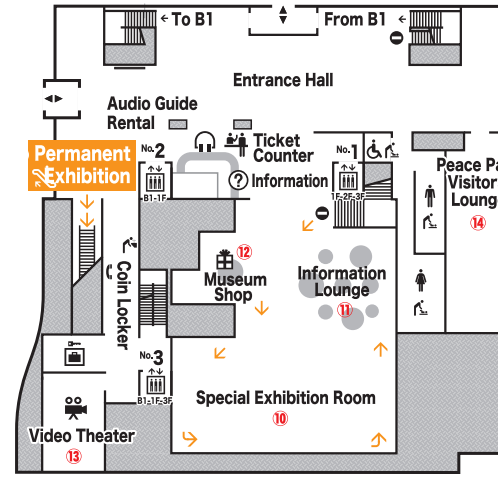
August 6, 1945 -Outline of Atomic Bomb Damage
See exhibits from the Main Building, recently donated belongings, and items brought out from storage.

Belongings of Three Junior High Students
Cap and Belt donated by Kurakichi Tsuda,
Student Uniform donated by Shigeharu Fukuoka,
Gaiters donated by Kiyo Ueda.

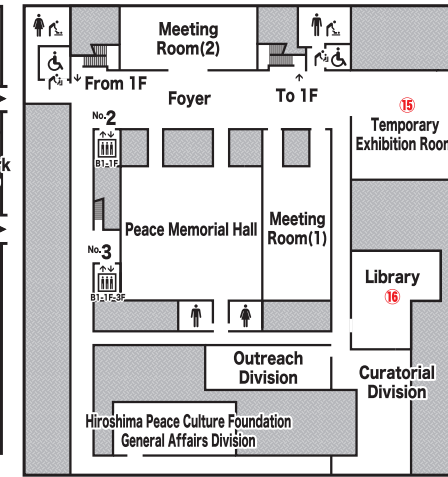


Paper Cranes Folded by Sadako
Donated by Shigeo and Masahiro Sasaki

1F Free Admission



B1F Free Admission



⑪ 1F Information corner

Please share Your impressions and comments are welcome.

⑫ 1F Museum Shop

⑬ 1F Video Theater

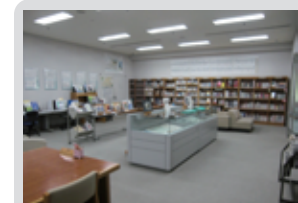
Documentary film on the A-bombing and Talks by A-bomb Legacy Successors are available. Japanese and English.

⑭ 1F Visitor's Lounge



⑮ Temporary Exhibition Room

See newly donated items.

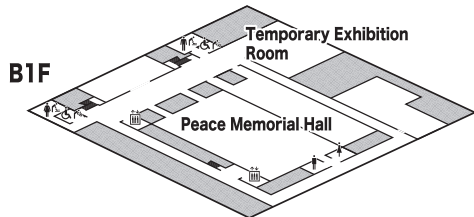


⑯ B1F Library

Materials related to the atomic bomb or peace are available to the public.

The computer may be used to search the peace database and the Internet for more information.

Open Hours: 9:00-17:00



Mushroom Cloud After the Atomic Bombing
August 6, 1945
Courtesy of US National Archives and Records Administration



Hondori Shopping Street
Around ca. 1935
Courtesy of Hiroshima Municipal Archives



Hiroshima in Ruins October 5, 1945 Photo by Shigeo Hayashi